

# Cisco Nexus 9800 Series Switches

---

# Contents

Product overview	3
Prominent feature	5
Licensing	6
Product sustainability	6
Product specifications	6
Ordering information	7
Cisco Capital	8

---

Cisco Nexus® 9800 Series Switches provide high-density 400G solutions in a chassis designed for future transition to high-density 800G and higher speeds.

## Product overview

The Cisco Nexus 9800 Series modular switches expand the Cisco Nexus 9000 Series portfolio with a new chassis that supports very high port density 400-Gigabit Ethernet line cards.

Data centers continue to evolve to support next-generation applications such as machine learning that drive massive bandwidth growth in intra data center traffic. To support this growth, data center operators require compact, high-capacity, high-speed, and highly efficient switches.

The Cisco Nexus 9800 Series chassis architecture can scale from 57 Tbps to 115 Tbps with a combination of various first-generation line cards and fabric modules. Each line card slot in the chassis can support line cards that offer 400GE or 100GE or 10/25/50GE ports.

The design of the Cisco Nexus 9800 Series chassis is a significant improvement on the previous-generation modular chassis design with better power distribution and connectors, fans, and a thermal design that allow the chassis to scale up to higher Ethernet speed line cards and fabric modules in the future. These design principles allow the doubling of total system capacity with next-generation line cards and fabric modules that support higher speed ports such as 800G at the same port density per slot as that of current-generation line cards.

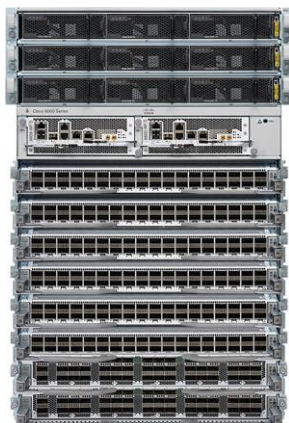
The Cisco Nexus 9800 Series switch line cards and fabric modules are built with a power-efficient, high-performance, and high-capacity ASIC that supports dynamic flow let load balancing, fully shared on-die packet buffer, and line rate performance for small packets. The ASIC provides these capabilities without compromising on features and power efficiency and enables the Cisco Nexus 9800 Series Switches to be optimized for supporting high bandwidth applications across data centers of varying sizes and scale.

Furthermore, the chassis architecture supports control plane redundancy with dual supervisors, data plane redundancy with up to eight fabric modules, fan tray redundancy with four fan trays, and power supply redundancy with up to 12 high efficiency power supplies.

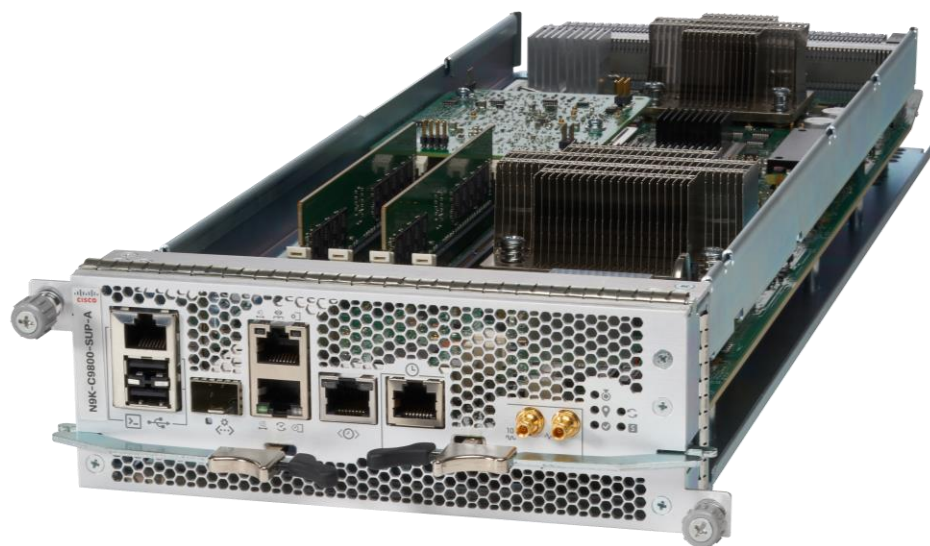
The Cisco Nexus 9800 Series delivers this high capacity with the efficiency and robustness of either Cisco® Application Specific Infrastructure (Cisco ACI®) or Cisco NX-OS operating systems. Moreover, the high capacity and port density of the Cisco Nexus 9800 Series enables data center fabrics to scale up while keeping the required number of spines lower. This results in lower overall infrastructure costs and higher overall power efficiency across the data center.

The fabric capacity in a Cisco Nexus 9800 Series chassis is delivered by up to eight fabric modules. Varying the number of fabric modules allows the chassis to provide fabric module redundancy and sufficient line rate capacity for line cards with different port speeds and port densities.

The Cisco Nexus 9800 8-slot chassis supports eight line card slots and three power supply trays.

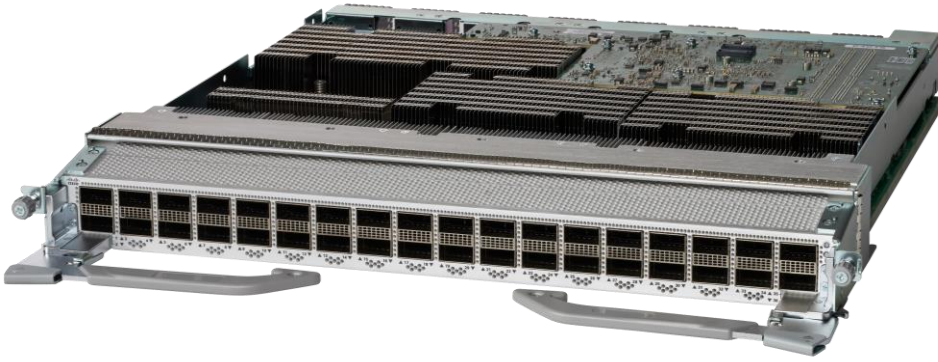


**Figure 1.**  
Cisco Nexus 9800 8-slot chassis



**Figure 2.**  
Cisco Nexus 9800 Supervisor (1<sup>st</sup> Generation)

The Cisco Nexus 9800 Series supports a 36-port 400G QSFP-DD line card. The QSFP-DD ports are also backward compatible with QSFP28 and QSFP+ modules. This line card provides up to 14.4 Tbps capacity with at least seven fabric modules. If the chassis is configured with eight fabric modules, the chassis would provide 7+1 fabric module redundancy to this line card. This line card also supports line rate MACsec encryption on all ports. Furthermore, each 400G port also supports 2x 100G, 4x 100, 4x 25, and 4x 10G breakout options.



**Figure 3.**  
Cisco Nexus 9800 36-port QSFP-DD 400G line card with MACsec

The Cisco Nexus 9800 series switches supports dual input, high power, and high efficiency power supplies for AC, DC, and high-voltage AC/DC power inputs.

## Prominent feature

### High Speed/High Density Connectivity

The Cisco Nexus 9800 series switches support line cards and fabric modules that provide 36 400G ports per slot. The advanced chassis design lays the foundation to support higher capacity ASICs and higher power optics in the future. This enables the chassis to support port speeds higher than 400G in the future.

### Buffering

The Cisco Nexus 9800 series switches support a fully shared buffer memory architecture that allows the switch to absorb bursts up to the available shared memory size. This shared buffer memory architecture also improves power efficiency by minimizing the number of read/write operations to process packets. In addition to this, the Cisco Nexus 9800 also supports hybrid HBM which dynamically handles even larger flows that could cause temporary congestion. The combination of a hybrid HBM with a fully shared buffer allows Cisco Nexus 9800 Series systems to achieve an effective buffer size much larger than the alternatives.

### Power Efficiency

The Cisco Nexus 9800 series switches enhances power efficiency by minimizing the number of power conversions within the chassis. A single system busbar distributes power to all cards and modules within the chassis. The dual input high-capacity hot-swappable power supplies provide enhanced power redundancy and added power efficiency.

### Scalability

IPv4 Unicast Routes Up to 1M

IPv6 Unicast Routes Up to 250K

IPv4 Host Routes Up to 256K

IPv6 Host Routes Up to 62K

## Licensing

The Cisco Nexus 9800 Series Switches require Cisco Data Center Networking (DCN) Premier, Advantage, or Essentials licenses for appropriate features. Certain features such as MACsec require add-on licenses such as a DCN security license.

## Product sustainability

Information about Cisco's environmental, social, and governance (ESG) initiatives and performance is provided in Cisco's CSR and sustainability [reporting](#).

Sustainability Topic		Reference
General	Information on product-material-content laws and regulations	<a href="#">Materials</a>
	Information on electronic waste laws and regulations, including our products, batteries, and packaging	<a href="#">WEEE Compliance</a>
	Information on product takeback and reuse program	<a href="#">Cisco Takeback and Reuse Program</a>
	Sustainability Inquiries	Contact: <a href="mailto:csr_inquiries@cisco.com">csr_inquiries@cisco.com</a>
Material	Product packaging weight and materials	Contact: <a href="mailto:environment@cisco.com">environment@cisco.com</a>

## Product specifications

**Table 1.** Cisco Nexus 9800 Series chassis specifications

Description	Specification
Number of line card slots	8
Number of fabric module slots	8
Number of supervisor slots	2
Number of fan trays	4
Number of power supply trays	3
Number of power supplies	AC and High-voltage power supplies: 9 (3 per tray) DC power supplies: 12 (4 per tray)
Weight	Unloaded: 162 lbs (73 kg) Fully loaded: 658 lbs (299 kg)
Dimensions	(H) 28 x (W) 17.45 x (D) 33.73 in. (71.12 x 44.32 x 85.7 cm)
Height	16 RU

## Ordering information

**Table 2.** Ordering information

Product ID	Description
<b>N9K-C9808</b>	Cisco Nexus 9800 8-slot chassis
<b>N9K-C9800-SUP-A</b>	Cisco Nexus 9800 Supervisor (1 <sup>st</sup> Generation)
<b>N9K-C9808-FM-A</b>	Cisco Nexus 9800 8-slot chassis fabric module (1 <sup>st</sup> Generation)
<b>N9K-C9808-FAN-A</b>	Cisco Nexus 9800 8-slot chassis fan tray (1 <sup>st</sup> Generation)
<b>N9K-X9836DM-A</b>	Cisco Nexus 9800 36-port 400G line card with MACsec
<b>N9800-HV-TRAY</b>	Cisco Nexus 9800 Power Supply Tray for AC and HV Power Supplies
<b>N9800-DC-TRAY</b>	Cisco Nexus 9800 Power Supply Tray for DC Power Supplies
<b>NXK-HV6.3KW20A-A</b>	Cisco Nexus 9800 6,300W 20A AC and HV Power Supply
<b>NXK-HV6.3KW30A-A</b>	Cisco Nexus 9800 6,300W 30A AC and HV Power Supply
<b>NXK-DC4.4KW-A</b>	Cisco Nexus 9800 4,400W DC Power Supply
<b>N9K-C9800-IN-KIT</b>	Cisco Nexus 9800 Installation Kit
<b>N9K-C9800-AR-KIT</b>	Cisco Nexus 9800 Adjustable Rail Kit
<b>N9K-C9800-CM-KIT</b>	Cisco Nexus 9800 Cable Management Kit
<b>N9K-C9800-DF-KIT</b>	Cisco Nexus 9800 Door and Filter Kit
<b>N9K-C9800-RMB</b>	Cisco Nexus 9800 Rear Mounting Brackets

---

## Cisco Capital

### Flexible payment solutions to help you achieve your objectives

Cisco Capital makes it easier to get the right technology to achieve your objectives, enable business transformation and help you stay competitive. We can help you reduce the total cost of ownership, conserve capital, and accelerate growth. In more than 100 countries, our flexible payment solutions can help you acquire hardware, software, services and complementary third-party equipment in easy, predictable payments. [Learn more.](#)

**Americas Headquarters**  
Cisco Systems, Inc.  
San Jose, CA

**Asia Pacific Headquarters**  
Cisco Systems (USA) Pte. Ltd.  
Singapore

**Europe Headquarters**  
Cisco Systems International BV Amsterdam,  
The Netherlands

Cisco has more than 200 offices worldwide. Addresses, phone numbers, and fax numbers are listed on the Cisco Website at <https://www.cisco.com/go/offices>.

Cisco and the Cisco logo are trademarks or registered trademarks of Cisco and/or its affiliates in the U.S. and other countries. To view a list of Cisco trademarks, go to this URL: <https://www.cisco.com/go/trademarks>. Third-party trademarks mentioned are the property of their respective owners. The use of the word partner does not imply a partnership relationship between Cisco and any other company. (1110R)